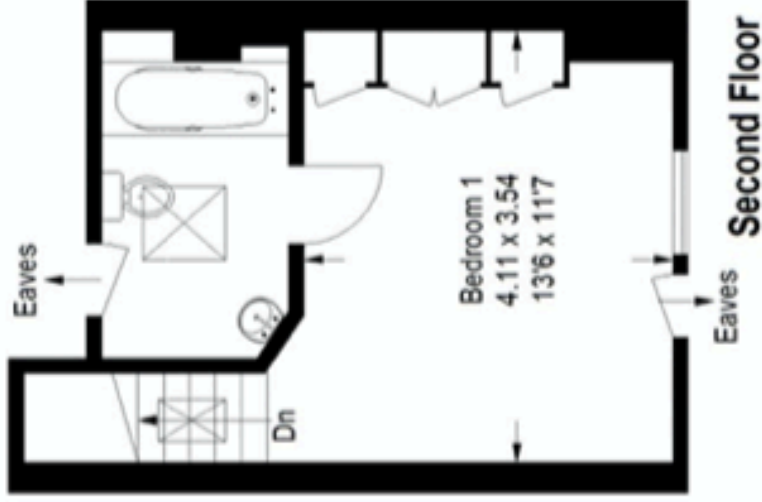
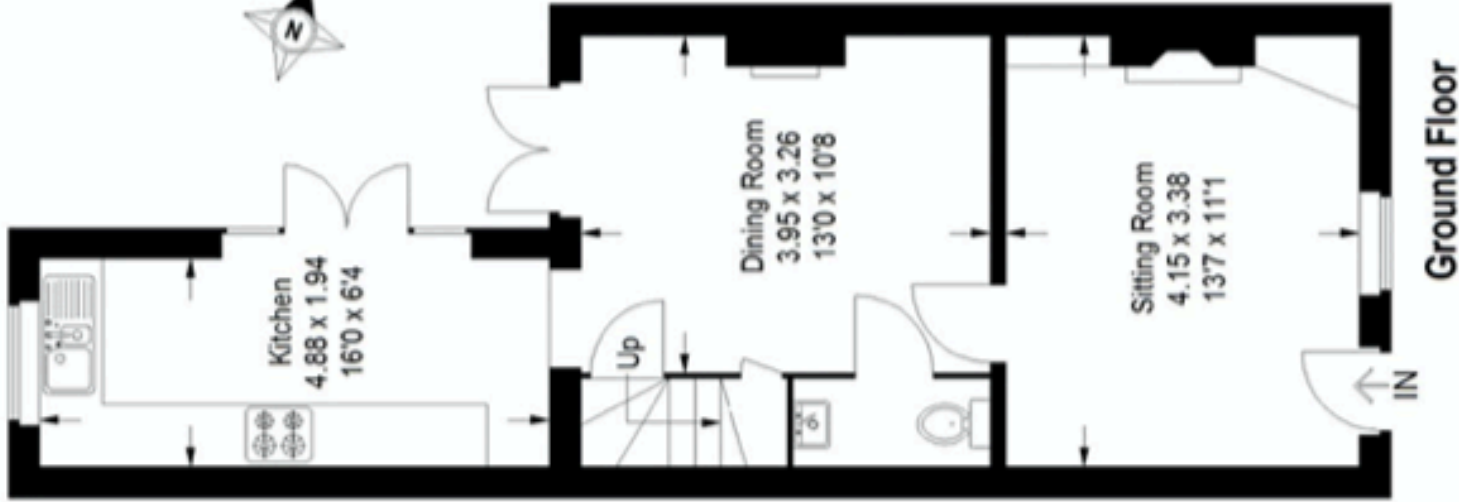


3 Great George Street, Godalming

This plan is for representation purposes only as defined by the RICS Code of Measuring Practice. Not drawn to scale unless stated. Please check all dimensions before making any decisions reliant upon them. No guarantee is given on square footage if quoted. Any figures if quoted should not be used as a basis for valuation.

Approximate Gross Internal Area
Ground Floor = 42.5 sq m / 457 sq ft
First Floor = 31.1 sq m / 335 sq ft
Second Floor = 23.5 sq m / 253 sq ft
Total = 97.1 sq m / 1045 sq ft



Ground Floor

First Floor

Second Floor